



SIGNATUREGLOBAL HOMES LIMITED | CIN: U70100DL2008PLC176641
CORP. OFFICE: GROUND FLOOR, TOWER A, SIGNATURE TOWERS, SOUTH CITY 1, GURUGRAM, HARYANA - 122001
REGD. OFFICE: UNIT NO. 1309, 13TH FLOOR, DR. GOPAL DAS BHAWAN, 28 BARAKHAMBA ROAD, CONNAUGHT PLACE, NEW DELHI - 110001
WWW.SIGNATUREGLOBAL.IN



Disclaimer: The information contained in this Brochure/ Multipager ("Brochure"), is merely informative and unless otherwise expressly provided, all contents are for general information purposes. Nothing contained herein intends to constitute a legal offer / invitation to offer or sale. The reader hereby accepts and agrees to be bound by and comply with these legal terms of use. This Brochure contains proprietary information, exclusive to the Promoter Company. The contents, and any information or opinion on the project, if any, may not be reproduced, transmitted (by any means), modified, sold, circulated, shared or otherwise provided, in whole or in part, to any other person or entity, nor can it be store, archive or in any other way put to use or used for any public or commercial purpose without the Promoter's explicit consent. Promoter reserves its right to revoke any such consent, without prior notice. Any unauthorized review, use, disclosure, dissemination, forwarding, printing or copying of any page, information of the Brochure or any action taken upon reliance on such information is strictly prohibited and may be unlawful and the Promoter reserves its rights both in law and equity to take appropriate action in this regard. The information and contents herein, including all designs, layouts, specifications, plans, dimensions, measurements, areas, figures, locations, services, landscape, facilities, amenities & infrastructure etc., are merely indicative, illustrative; and not to scale and are indicative of the envisaged developments; and subject to revision by the Promoter as may be required and approved by the Competent Authorities. Actual design may vary in the fit and finished form, from the one displayed above. Revision, alteration, modification, addition, deletion, substitution or recast, if any, may be necessary during construction. The units mentioned herein are subject to availability. Recipients/viewers are advised to exercise their discretion in relying on the information shown/provided and are requested to verify all the details, including area, amenities, services, terms of sales and payments and other relevant terms independently with the Promoter Company, have understanding of the same and take appropriate independent advice prior to concluding any decision for buying any Unit(s) in the Project. "Signature Global Park-1 Ext." is an Affordable Residential Plotted Colony under Deen Dayal Jan Awaz Yojana-2016 being developed by Signatureglobal Homes Private Limited on 2.96875 Acres falling in the revenue estate of Village Dhunela, Sector-36, Sohna, Gurugram, Haryana. The Director, Town and Country Planning, Haryana, Chandigarh ("DTCP") had granted a License to the Developer bearing no. 154 of 2024 dated 17.11.2024 over an additional area of land ad-measuring 2.96875 acres in the revenue estate of Village Dhunela, Sector-36, Sohna, Gurugram, Haryana in addition to license no. 18 of 2021 dated 16.04.2021 for adjoining licensed granted area measuring 5.0 acres. The Affordable Plotted Colony is duly registered with Haryana Real Estate Regulatory Authority vide H-RERA Registration No. GGM/941/673/2025/44 dated 01.05.2025 and the Project is registered vide Registration No. GGM/942/674/2025/45 dated 01.05.2025. Copies of approvals are available for inspection at Promoter Company corporate office. The Developer has obtained the approval on the final layout plan/demarcation/zoning/site plan, or any other requisite approval from DTCP for the Real Estate Project, as the case may be, and from DTCP vide Memo No. ZP-1474/JD(RA)/2024/40349, dated 18.12.2024. The use of word 'Signature Global' shall in no manner be construed or interpreted as Signature Global (India) Ltd. being the Promoter and / or Developer. *Rate mentioned above, if any, does not include GST and other statutory charges as applicable. Dispute with regard to the interpretation of information will be subject to the exclusive jurisdiction of District Courts at Gurugram, Haryana and Hon'ble High Court of Punjab & Haryana at Chandigarh, India. 1 sq. mt.=10.7639 sq. ft. *SignatureGlobal is the registered trademark of Signatureglobal (India) Limited

RERA REGISTRATION NO.:
RC/REP/HARERA/GGM/941/673/2025/44 DATED 01.05.2025
RC/REP/HARERA/GGM/942/674/2025/45 DATED 01.05.2025

(WWW.HARYANARERA.GOV.IN)
PROMOTOR: SIGNATUREGLOBAL HOMES LIMITED

IN THE LAP OF LUXURY AT THE FOOTSTEPS OF THE ARAVALLIS.

**SIGNATURE
GLOBAL PARK 1 EXT.**
SECTOR 36, SOHNA, SOUTH OF GURUGRAM
ELEVATE AND REJUVENATE



SWING UNDER
PERGOLA



KIDS
POOL



SENIOR CITIZEN
SEATING



KID'S
PLAY AREA



SCULPTURE
GARDEN



HALF BASKETBALL
COURT



SWIMMING
POOL



**SIGNATURE
GLOBAL PARK 1 EXT.**
SECTOR 36, SOHNA, SOUTH OF GURUGRAM

ELEVATE AND REJUVENATE

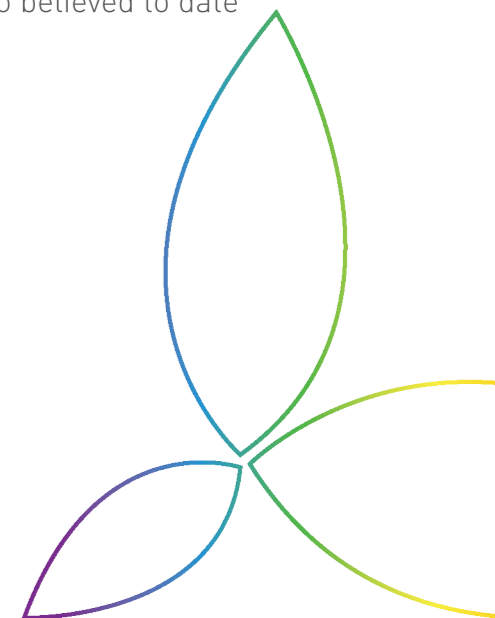
**INDEPENDENT
FLOORS
FOR THE
INDEPENDENT
YOU**



It's a haven set in the heart of nature. It is where old majestic hills surround your modern home. Away from sooty pollution of the city, the pristine settings take you to the pinnacle of blissful living. Signature Global Park 1 Ext. is designed to entice you with exquisite architecture and exclusive location. A perfect blend of beauty and comfort, the premium floors truly redefine fine living as a fine art. Here, modern amenities blend seamlessly with nature. And the charming landscape promises a sumptuous indulgence. It is definitely the choice of today for a joyous tomorrow.

If you're a nature lover who prefers to return home to a calm neighborhood and a fresher environment, you will find living in South of Gurugram a lot more invigorating than living in Gurugram because:

- South of Gurugram is home to Damdama Lake; one of Haryana's largest natural lakes.
- South of Gurugram is flanked by the Aravalli Mountains; one of the world's oldest mountain ranges and an environmentally protected zone.
- South of Gurugram is popular for its hot sulphur springs known for their medicinal properties. The springs are located at the foot of a rock and are capped by a dome believed to have been built in the 14th century, though they are also believed to date back to the times of the Pandavas.



LOCATION ADVANTAGES



More Than 6 Reputed Schools are in close Proximity

G.D. Goenka Signature School, Ryan International School, DPS Maruti Kunj, St. Xavier's High School, Pathway International School, Asian Public School, KIIT Collage of Engineering, G.D. Goenka University, K.R. Mangalam University, and JK Business School are some of the reputed schools in the vicinity.



Near Sohna Elevated Road and on Delhi-Mumbai Industrial Corridor.

The elevated road will help you zip across from Subhah Chowk to Badshapur. Sohna Road is also being upgraded to an 8-lane National Highway. This will provide seamless connectivity to other parts of southern Gurugram.



Shopping Malls with Leading Brands are in close proximity.

Shop to your hearts delight. You'll find all your favourite brands tucked in the grandest malls all around you.



Top Hotels are in close proximity.

Country Inn is within 5.3 km; other hotels include Lemon Tree, The Taj Gateway Resorts, The Botanix Resorts and The Westin Sohna Resort & Spa.



11 Multiplex Screens to be Functional Soon

Enjoy a day out at the movies. Have a rendezvous with your favourite genre. A number of state-of-the-art cinemas are all around you just for that.



Office Complexes and Business Hubs are in the Neighbourhood

Genpact, Converges, Capgemini, McKinsey, Ancient, PepsiCo, NTT Data and all leading banks operating in a 15 km radius.



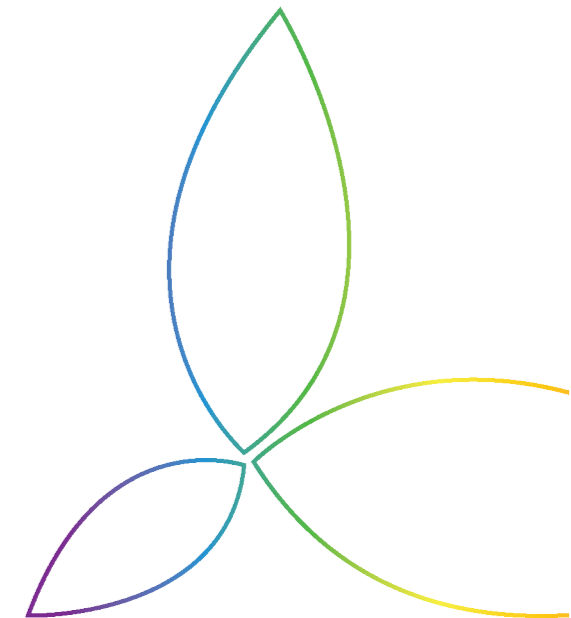
Adventure Park is in the Vicinity

Enjoy a wide variety of adventurous activities that include rope cycling, mountain climbing, obstacle rope course, rappelling, dirt remote cars, bungee run, kids rope course, etc.



Lush Green Environment Surrounded by the Aravallis.

South of Gurugram is surrounded by the Aravallis.



AMENITIES



WATER FEATURE



SWING UNDER PERGOLA



PATHWAY ALONG GREEN



KIDS' PLAY AREA



CRICKET NET PRACTICE



LAWN



KIDS POOL



SCULPTURE GARDEN



SKATING RINK



HALF BASKETBALL COURT



SENIOR CITIZEN SEATING



OPEN AIR THEATRE WITH SITTING UNDER TRELLIS

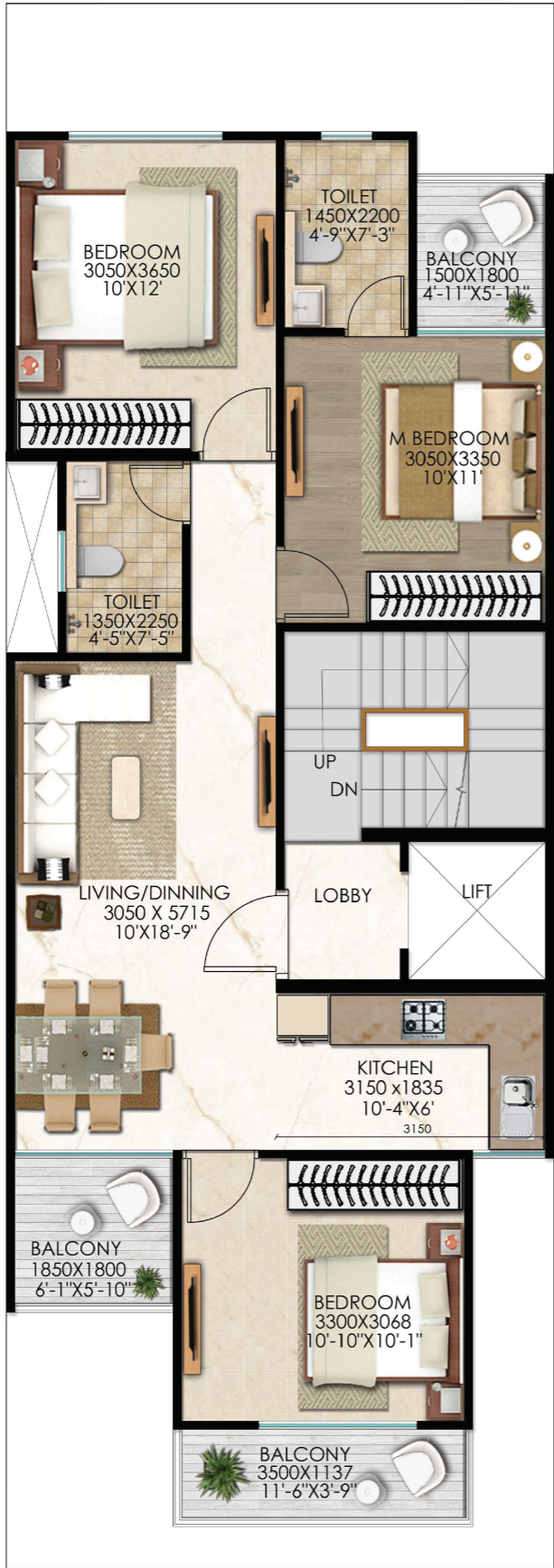


SWIMMING POOL

SITE PLAN

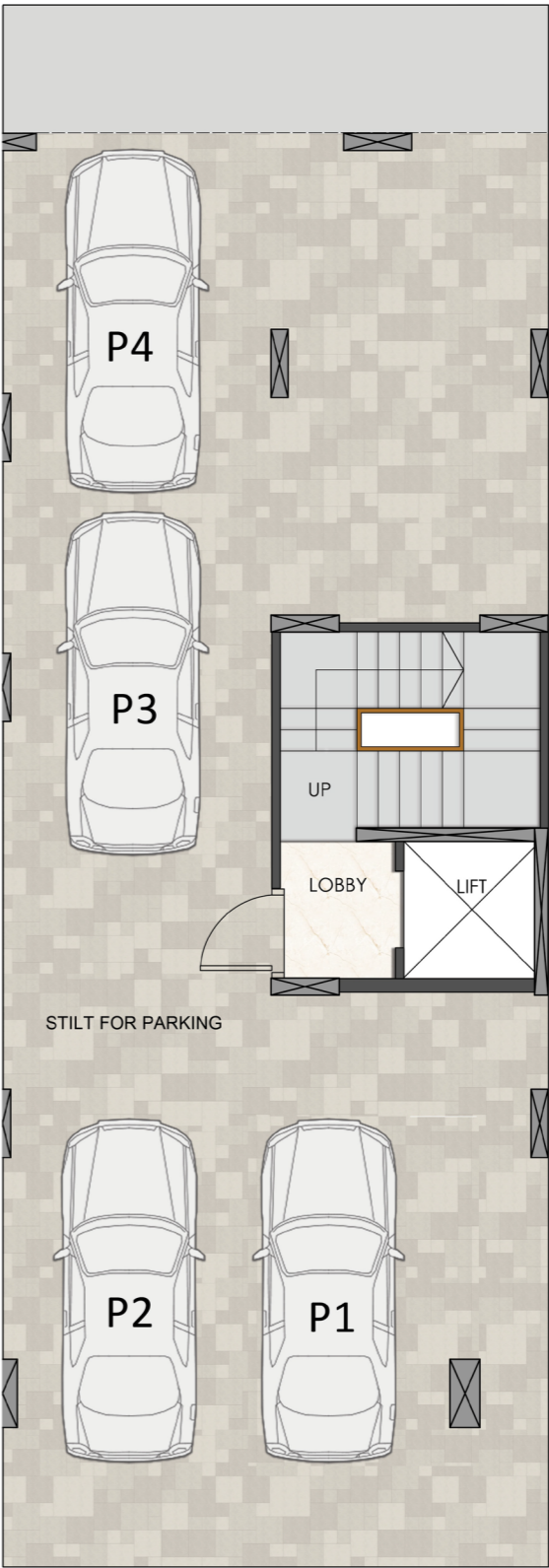


TYPE-B (I) (3BHK + 2 TOILETS)



• Car Parking Floor (Stilt Floor) • First Floor • Second Floor • Third Floor • Fourth Floor

TYPE-B (I) STILT FLOOR

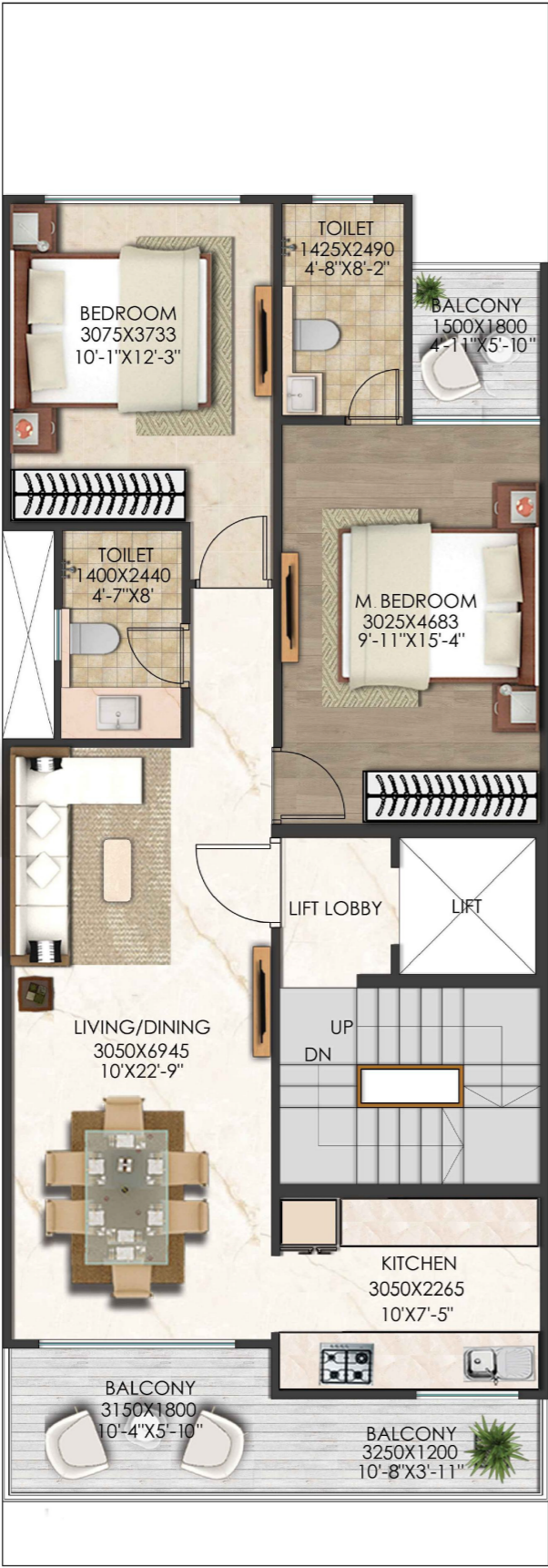


• Car Parking Floor (Stilt Floor) • First Floor • Second Floor • Third Floor • Fourth Floor

Disclaimer: It should be noted that the information contained herein may have certain technical inaccuracies or typographical errors, and while the Promoter Company does not doubt the Unit Plan's accuracy, no guarantee or warranty or representation as to its accuracy and completeness is being made by the Promoter Company. Unit Plan(s)/ Site Plan/ Layout Plan is/ are intended to give a specific view of the layout only. Minor inaccuracies in square footage and inaccuracies in layout and room dimensions as shown on any Plan will not excuse the Allottee from completing the purchase of the Unit without abatement in price and/ or recourse against the Promoter Company. Further, Site plans, layout plans, landscaping, dimensions and Specification(s) are not deemed or intended to form part of any contract or warranty unless specifically incorporated in writing into the contract and signed by the parties to it.
For the purpose of this Project, 1 Hect. = 2.471 Acres. 1 Acre = 4840 sq.yds. or 4046.864 sq. mtrs., 1 sq.mtr. = 10.764 sq.ft.

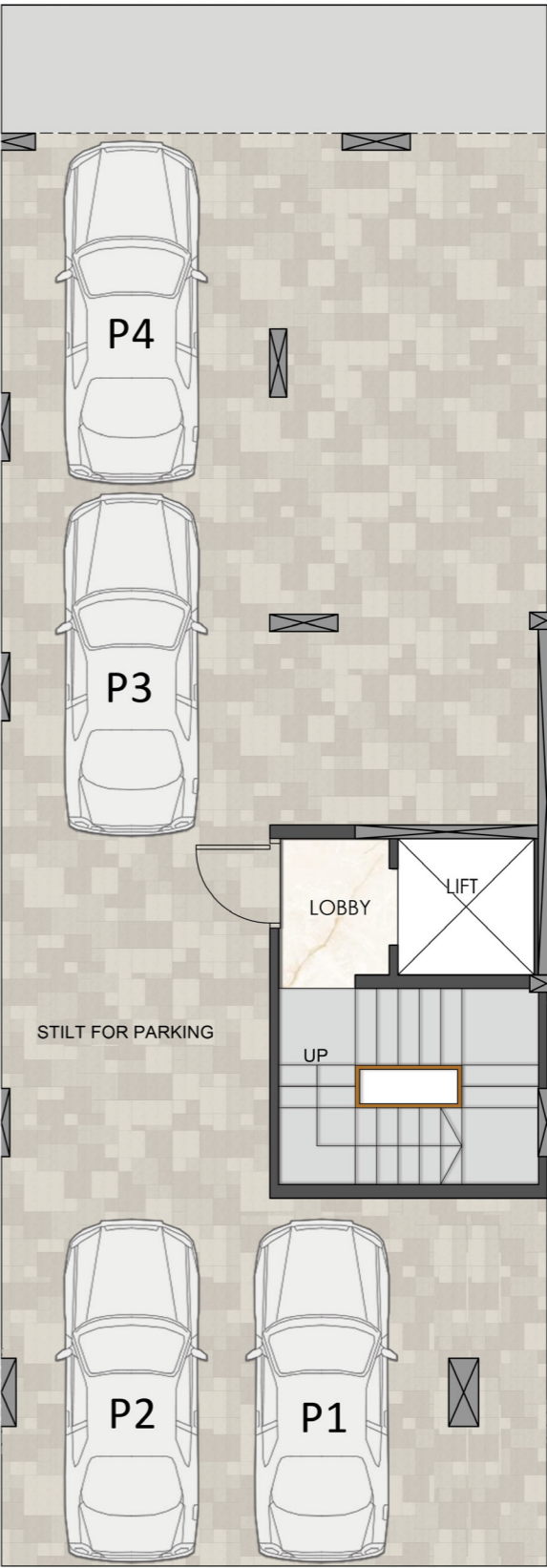
Disclaimer: It should be noted that the information contained herein may have certain technical inaccuracies or typographical errors, and while the Promoter Company does not doubt the Unit Plan's accuracy, no guarantee or warranty or representation as to its accuracy and completeness is being made by the Promoter Company. Unit Plan(s)/ Site Plan/ Layout Plan is/ are intended to give a specific view of the layout only. Minor inaccuracies in square footage and inaccuracies in layout and room dimensions as shown on any Plan will not excuse the Allottee from completing the purchase of the Unit without abatement in price and/ or recourse against the Promoter Company. Further, Site plans, layout plans, landscaping, dimensions and Specification(s) are not deemed or intended to form part of any contract or warranty unless specifically incorporated in writing into the contract and signed by the parties to it.
For the purpose of this Project, 1 Hect. = 2.471 Acres. 1 Acre = 4840 sq.yds. or 4046.864 sq. mtrs., 1 sq.mtr. = 10.764 sq.ft.

TYPE-B (II) (2BHK + 2 TOILETS)



• Car Parking Floor (Stilt Floor) • First Floor • Second Floor • Third Floor • Fourth Floor

TYPE-B (II) STILT FLOOR



• Car Parking Floor (Stilt Floor) • First Floor • Second Floor • Third Floor • Fourth Floor

Disclaimer: It should be noted that the information contained herein may have certain technical inaccuracies or typographical errors, and while the Promoter Company does not doubt the Unit Plan's accuracy, no guarantee or warranty or representation as to its accuracy and completeness is being made by the Promoter Company. Unit Plan(s)/ Site Plan/ Layout Plan is/ are intended to give a specific view of the layout only. Minor inaccuracies in square footage and inaccuracies in layout and room dimensions as shown on any Plan will not excuse the Allottee from completing the purchase of the Unit without abatement in price and/ or recourse against the Promoter Company. Further, Site plans, layout plans, landscaping, dimensions and Specification(s) are not deemed or intended to form part of any contract or warranty unless specifically incorporated in writing into the contract and signed by the parties to it.
For the purpose of this Project, 1 Hect. = 2.471 Acres. 1 Acre = 4840 sq.yds. or 4046.864 sq. mtrs., 1 sq.mtr. = 10.764 sq.ft.

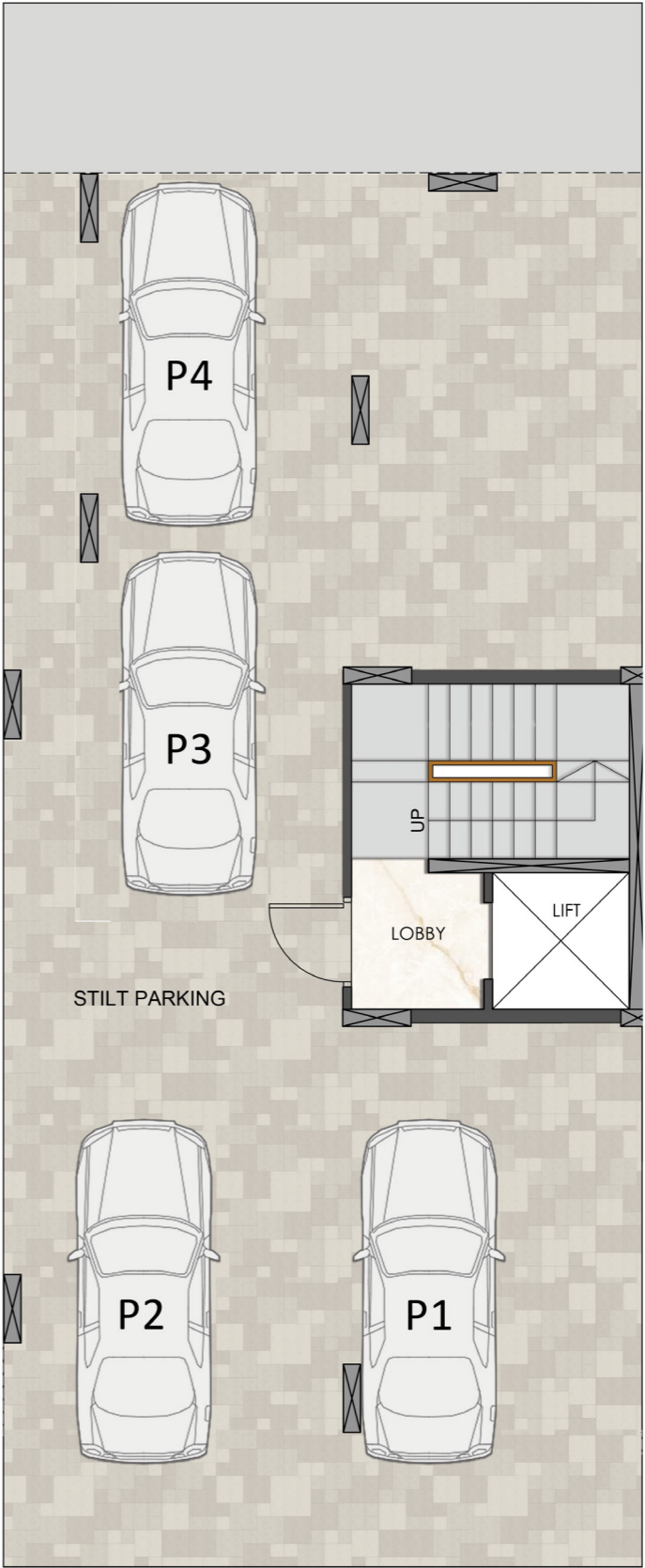
Disclaimer: It should be noted that the information contained herein may have certain technical inaccuracies or typographical errors, and while the Promoter Company does not doubt the Unit Plan's accuracy, no guarantee or warranty or representation as to its accuracy and completeness is being made by the Promoter Company. Unit Plan(s)/ Site Plan/ Layout Plan is/ are intended to give a specific view of the layout only. Minor inaccuracies in square footage and inaccuracies in layout and room dimensions as shown on any Plan will not excuse the Allottee from completing the purchase of the Unit without abatement in price and/ or recourse against the Promoter Company. Further, Site plans, layout plans, landscaping, dimensions and Specification(s) are not deemed or intended to form part of any contract or warranty unless specifically incorporated in writing into the contract and signed by the parties to it.
For the purpose of this Project, 1 Hect. = 2.471 Acres. 1 Acre = 4840 sq.yds. or 4046.864 sq. mtrs., 1 sq.mtr. = 10.764 sq.ft.

TYPE-C (3BHK + 3 TOILETS)



• Car Parking Floor (Stilt Floor) • First Floor • Second Floor • Third Floor • Fourth Floor

TYPE-C STILT FLOOR



• Car Parking Floor (Stilt Floor) • First Floor • Second Floor • Third Floor • Fourth Floor

Disclaimer: It should be noted that the information contained herein may have certain technical inaccuracies or typographical errors, and while the Promoter Company does not doubt the Unit Plan's accuracy, no guarantee or warranty or representation as to its accuracy and completeness is being made by the Promoter Company. Unit Plan(s)/ Site Plan/ Layout Plan is/ are intended to give a specific view of the layout only. Minor inaccuracies in square footage and inaccuracies in layout and room dimensions as shown on any Plan will not excuse the Allottee from completing the purchase of the Unit without abatement in price and/ or recourse against the Promoter Company. Further, Site plans, layout plans, landscaping, dimensions and Specification(s) are not deemed or intended to form part of any contract or warranty unless specifically incorporated in writing into the contract and signed by the parties to it. For the purpose of this Project, 1 Hect. = 2.471 Acres, 1 Acre = 4840 sq.yds, or 4046.864 sq. mtrs., 1 sq.mtr. = 10.764 sq.ft.

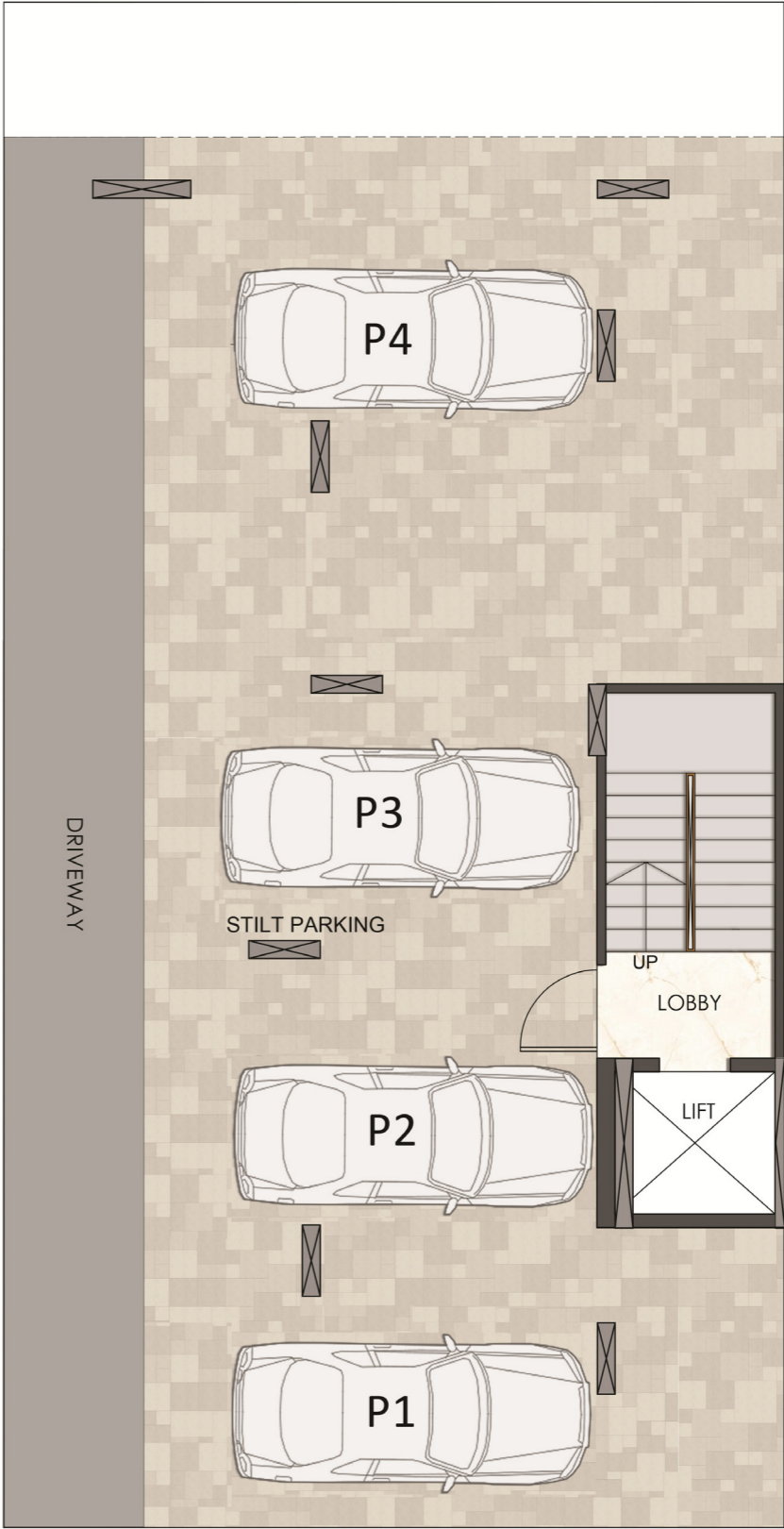
Disclaimer: It should be noted that the information contained herein may have certain technical inaccuracies or typographical errors, and while the Promoter Company does not doubt the Unit Plan's accuracy, no guarantee or warranty or representation as to its accuracy and completeness is being made by the Promoter Company. Unit Plan(s)/ Site Plan/ Layout Plan is/ are intended to give a specific view of the layout only. Minor inaccuracies in square footage and inaccuracies in layout and room dimensions as shown on any Plan will not excuse the Allottee from completing the purchase of the Unit without abatement in price and/ or recourse against the Promoter Company. Further, Site plans, layout plans, landscaping, dimensions and Specification(s) are not deemed or intended to form part of any contract or warranty unless specifically incorporated in writing into the contract and signed by the parties to it. For the purpose of this Project, 1 Hect. = 2.471 Acres, 1 Acre = 4840 sq.yds, or 4046.864 sq. mtrs., 1 sq.mtr. = 10.764 sq.ft.

TYPE-D (3BHK + 3 TOILETS)



• Car Parking Floor (Stilt Floor) • First Floor • Second Floor • Third Floor • Fourth Floor

TYPE-D STILT FLOOR



• Car Parking Floor (Stilt Floor) • First Floor • Second Floor • Third Floor • Fourth Floor

Disclaimer: It should be noted that the information contained herein may have certain technical inaccuracies or typographical errors, and while the Promoter Company does not doubt the Unit Plan's accuracy, no guarantee or warranty or representation as to its accuracy and completeness is being made by the Promoter Company. Unit Plan(s)/ Site Plan/ Layout Plan is/ are intended to give a specific view of the layout only. Minor inaccuracies in square footage and inaccuracies in layout and room dimensions as shown on any Plan will not excuse the Allottee from completing the purchase of the Unit without abatement in price and/ or recourse against the Promoter Company. Further, Site plans, layout plans, landscaping, dimensions and Specification(s) are not deemed or intended to form part of any contract or warranty unless specifically incorporated in writing into the contract and signed by the parties to it.
For the purpose of this Project, 1 Hect. = 2.471 Acres, 1 Acre = 4840 sq.yds. or 4046.864 sq. mtrs., 1 sq.mtr. = 10.764 sq.ft.

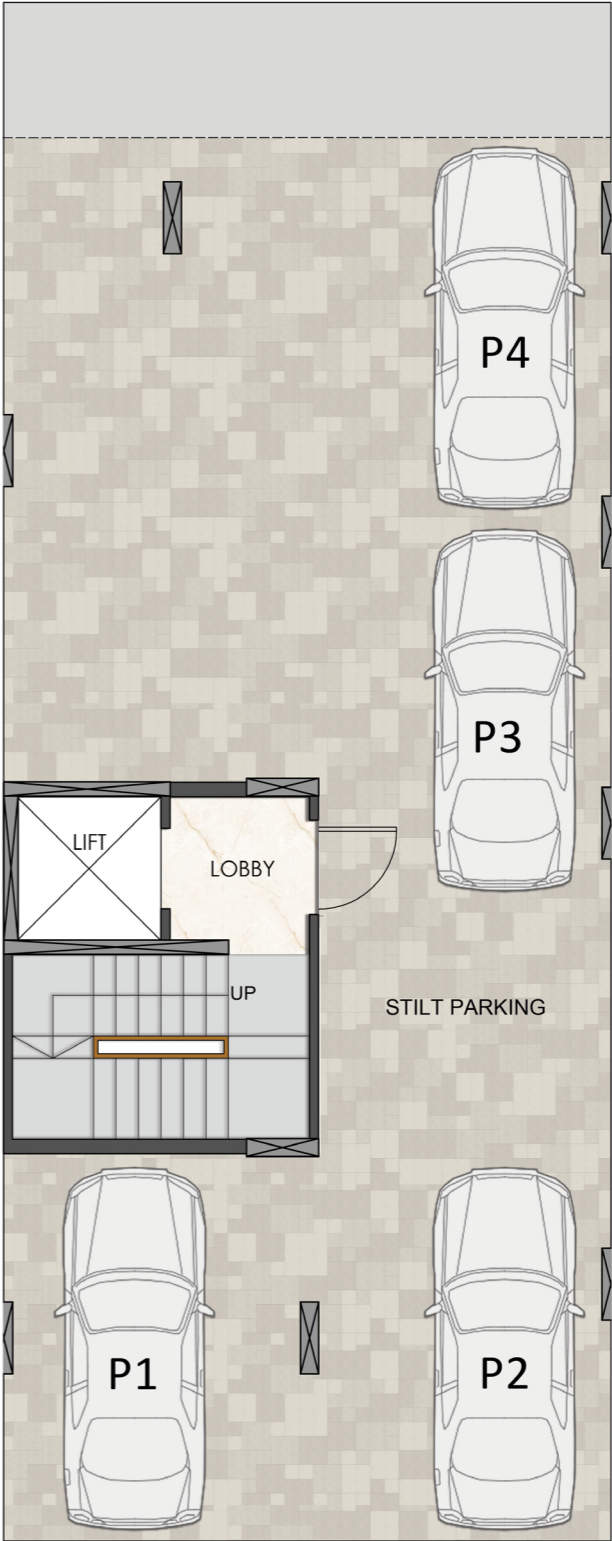
Disclaimer: It should be noted that the information contained herein may have certain technical inaccuracies or typographical errors, and while the Promoter Company does not doubt the Unit Plan's accuracy, no guarantee or warranty or representation as to its accuracy and completeness is being made by the Promoter Company. Unit Plan(s)/ Site Plan/ Layout Plan is/ are intended to give a specific view of the layout only. Minor inaccuracies in square footage and inaccuracies in layout and room dimensions as shown on any Plan will not excuse the Allottee from completing the purchase of the Unit without abatement in price and/ or recourse against the Promoter Company. Further, Site plans, layout plans, landscaping, dimensions and Specification(s) are not deemed or intended to form part of any contract or warranty unless specifically incorporated in writing into the contract and signed by the parties to it.
For the purpose of this Project, 1 Hect. = 2.471 Acres, 1 Acre = 4840 sq.yds. or 4046.864 sq. mtrs., 1 sq.mtr. = 10.764 sq.ft.

TYPE-E (2BHK + 2 TOILETS)



• Car Parking Floor (Stilt Floor) • First Floor • Second Floor • Third Floor • Fourth Floor

TYPE-E STILT FLOOR



• Car Parking Floor (Stilt Floor) • First Floor • Second Floor • Third Floor • Fourth Floor

Disclaimer: It should be noted that the information contained herein may have certain technical inaccuracies or typographical errors, and while the Promoter Company does not doubt the Unit Plan's accuracy, no guarantee or warranty or representation as to its accuracy and completeness is being made by the Promoter Company. Unit Plan(s)/ Site Plan/ Layout Plan is/ are intended to give a specific view of the layout only. Minor inaccuracies in square footage and inaccuracies in layout and room dimensions as shown on any Plan will not excuse the Allottee from completing the purchase of the Unit without abatement in price and/ or recourse against the Promoter Company. Further, Site plans, layout plans, landscaping, dimensions and Specification(s) are not deemed or intended to form part of any contract or warranty unless specifically incorporated in writing into the contract and signed by the parties to it.
For the purpose of this Project, 1 Hect. = 2.471 Acres, 1 Acre = 4840 sq.yds. or 4046.864 sq. mtrs., 1 sq.mtr. = 10.764 sq.ft.

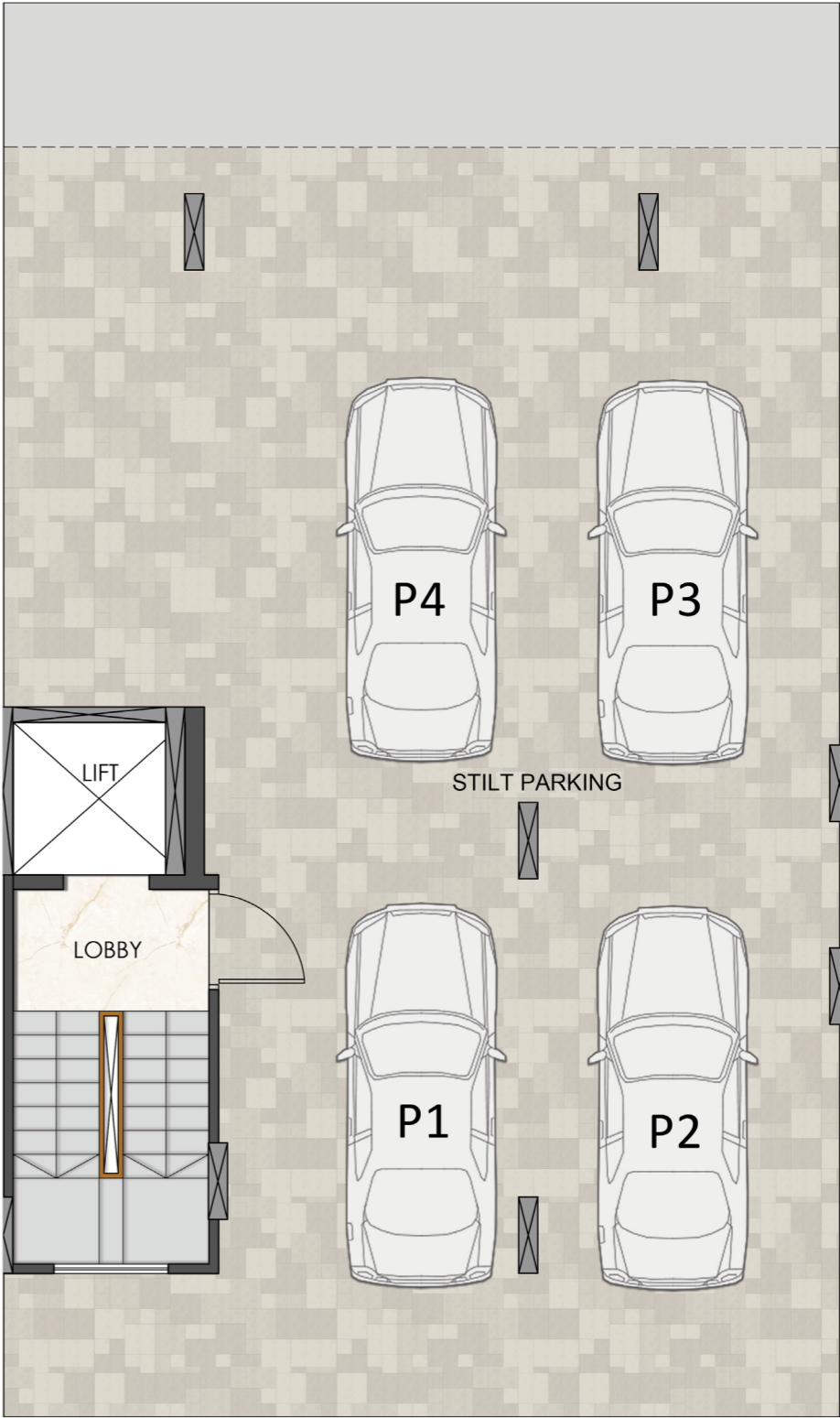
Disclaimer: It should be noted that the information contained herein may have certain technical inaccuracies or typographical errors, and while the Promoter Company does not doubt the Unit Plan's accuracy, no guarantee or warranty or representation as to its accuracy and completeness is being made by the Promoter Company. Unit Plan(s)/ Site Plan/ Layout Plan is/ are intended to give a specific view of the layout only. Minor inaccuracies in square footage and inaccuracies in layout and room dimensions as shown on any Plan will not excuse the Allottee from completing the purchase of the Unit without abatement in price and/ or recourse against the Promoter Company. Further, Site plans, layout plans, landscaping, dimensions and Specification(s) are not deemed or intended to form part of any contract or warranty unless specifically incorporated in writing into the contract and signed by the parties to it.
For the purpose of this Project, 1 Hect. = 2.471 Acres, 1 Acre = 4840 sq.yds. or 4046.864 sq. mtrs., 1 sq.mtr. = 10.764 sq.ft.

TYPE-F (3BHK + 3 TOILETS)



• Car Parking Floor (Stilt Floor) • First Floor • Second Floor • Third Floor • Fourth Floor

TYPE-F STILT FLOOR

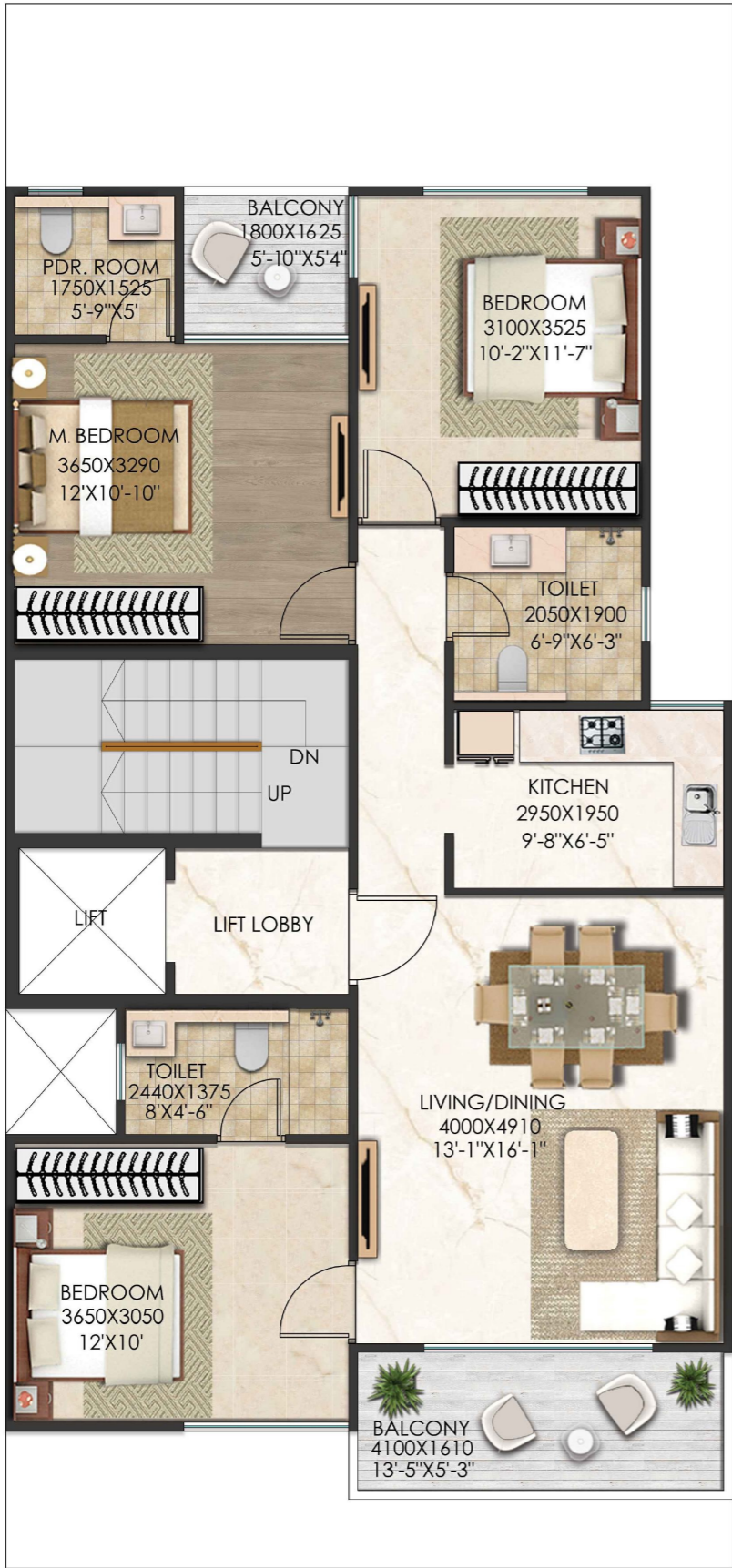


• Car Parking Floor (Stilt Floor) • First Floor • Second Floor • Third Floor • Fourth Floor

Disclaimer: It should be noted that the information contained herein may have certain technical inaccuracies or typographical errors, and while the Promoter Company does not doubt the Unit Plan's accuracy, no guarantee or warranty or representation as to its accuracy and completeness is being made by the Promoter Company. Unit Plan(s)/ Site Plan/ Layout Plan is/ are intended to give a specific view of the layout only. Minor inaccuracies in square footage and inaccuracies in layout and room dimensions as shown on any Plan will not excuse the Allottee from completing the purchase of the Unit without abatement in price and/ or recourse against the Promoter Company. Further, Site plans, layout plans, landscaping, dimensions and Specification(s) are not deemed or intended to form part of any contract or warranty unless specifically incorporated in writing into the contract and signed by the parties to it.
For the purpose of this Project, 1 Hect. = 2.471 Acres, 1 Acre = 4840 sq.yds. or 4046.864 sq. mtrs., 1 sq.mtr. = 10.764 sq.ft.

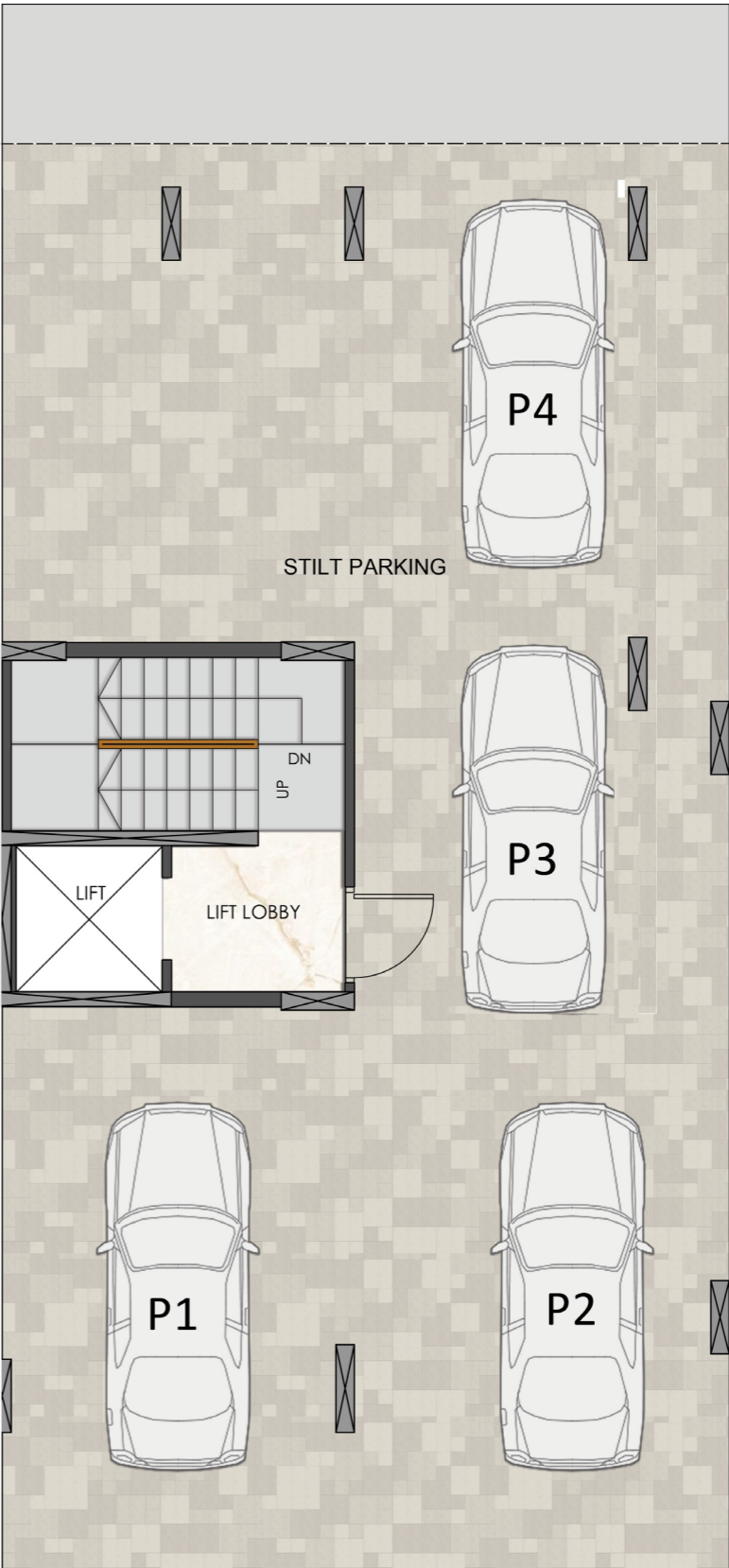
Disclaimer: It should be noted that the information contained herein may have certain technical inaccuracies or typographical errors, and while the Promoter Company does not doubt the Unit Plan's accuracy, no guarantee or warranty or representation as to its accuracy and completeness is being made by the Promoter Company. Unit Plan(s)/ Site Plan/ Layout Plan is/ are intended to give a specific view of the layout only. Minor inaccuracies in square footage and inaccuracies in layout and room dimensions as shown on any Plan will not excuse the Allottee from completing the purchase of the Unit without abatement in price and/ or recourse against the Promoter Company. Further, Site plans, layout plans, landscaping, dimensions and Specification(s) are not deemed or intended to form part of any contract or warranty unless specifically incorporated in writing into the contract and signed by the parties to it.
For the purpose of this Project, 1 Hect. = 2.471 Acres, 1 Acre = 4840 sq.yds. or 4046.864 sq. mtrs., 1 sq.mtr. = 10.764 sq.ft.

TYPE-G (3BHK + 2 TOILETS)



• Car Parking Floor (Stilt Floor) • First Floor • Second Floor • Third Floor • Fourth Floor

TYPE-G STILT FLOOR

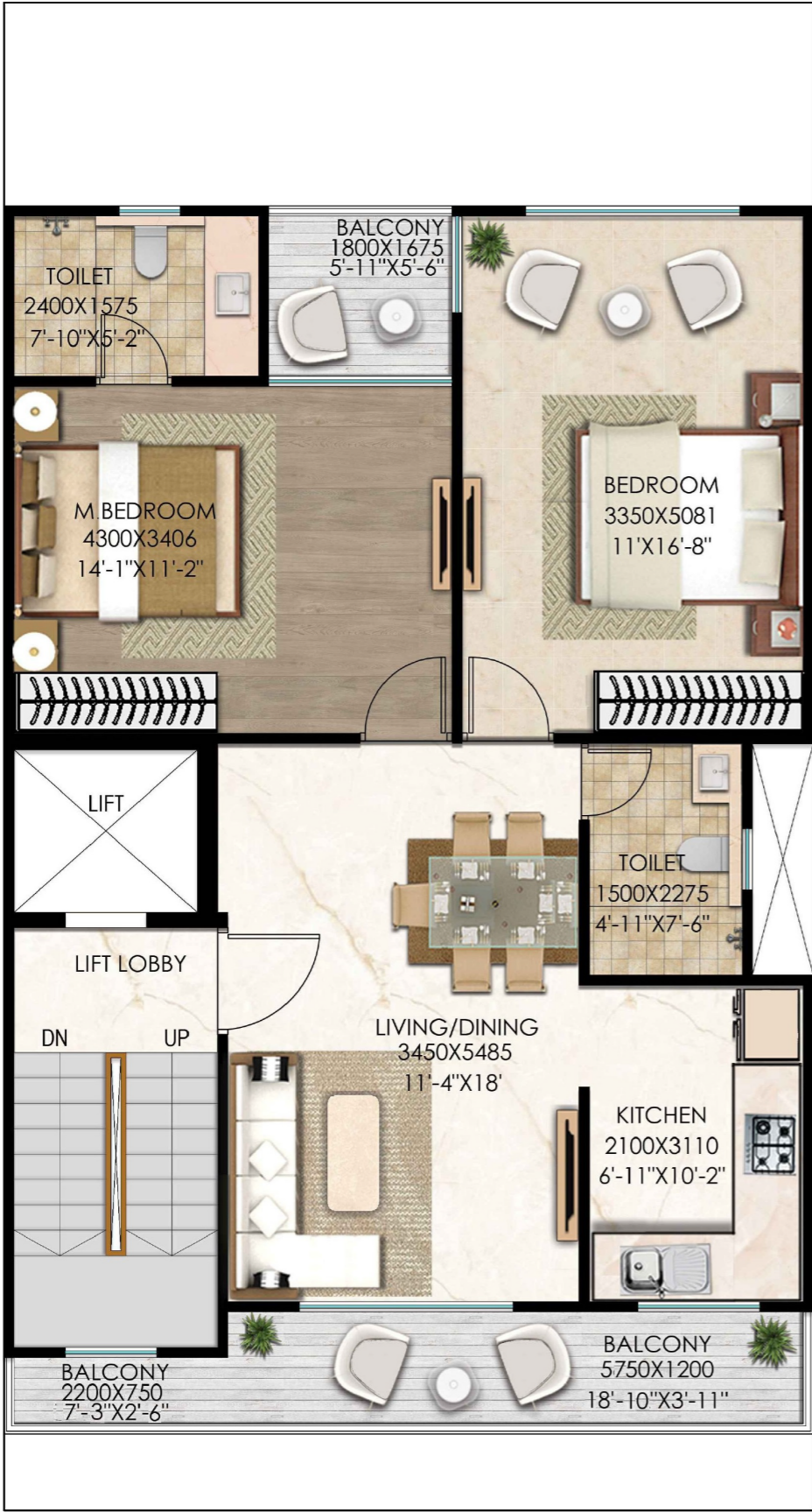


• Car Parking Floor (Stilt Floor) • First Floor • Second Floor • Third Floor • Fourth Floor

Disclaimer: It should be noted that the information contained herein may have certain technical inaccuracies or typographical errors, and while the Promoter Company does not doubt the Unit Plan's accuracy, no guarantee or warranty or representation as to its accuracy and completeness is being made by the Promoter Company. Unit Plan(s)/ Site Plan/ Layout Plan is/ are intended to give a specific view of the layout only. Minor inaccuracies in square footage and inaccuracies in layout and room dimensions as shown on any Plan will not excuse the Allottee from completing the purchase of the Unit without abatement in price and/ or recourse against the Promoter Company. Further, Site plans, layout plans, landscaping, dimensions and Specification(s) are not deemed or intended to form part of any contract or warranty unless specifically incorporated in writing into the contract and signed by the parties to it.
For the purpose of this Project, 1 Hect. = 2.471 Acres. 1 Acre = 4840 sq.yds. or 4046.864 sq. mtrs.. 1 sq.mtr. = 10.764 sq.ft.

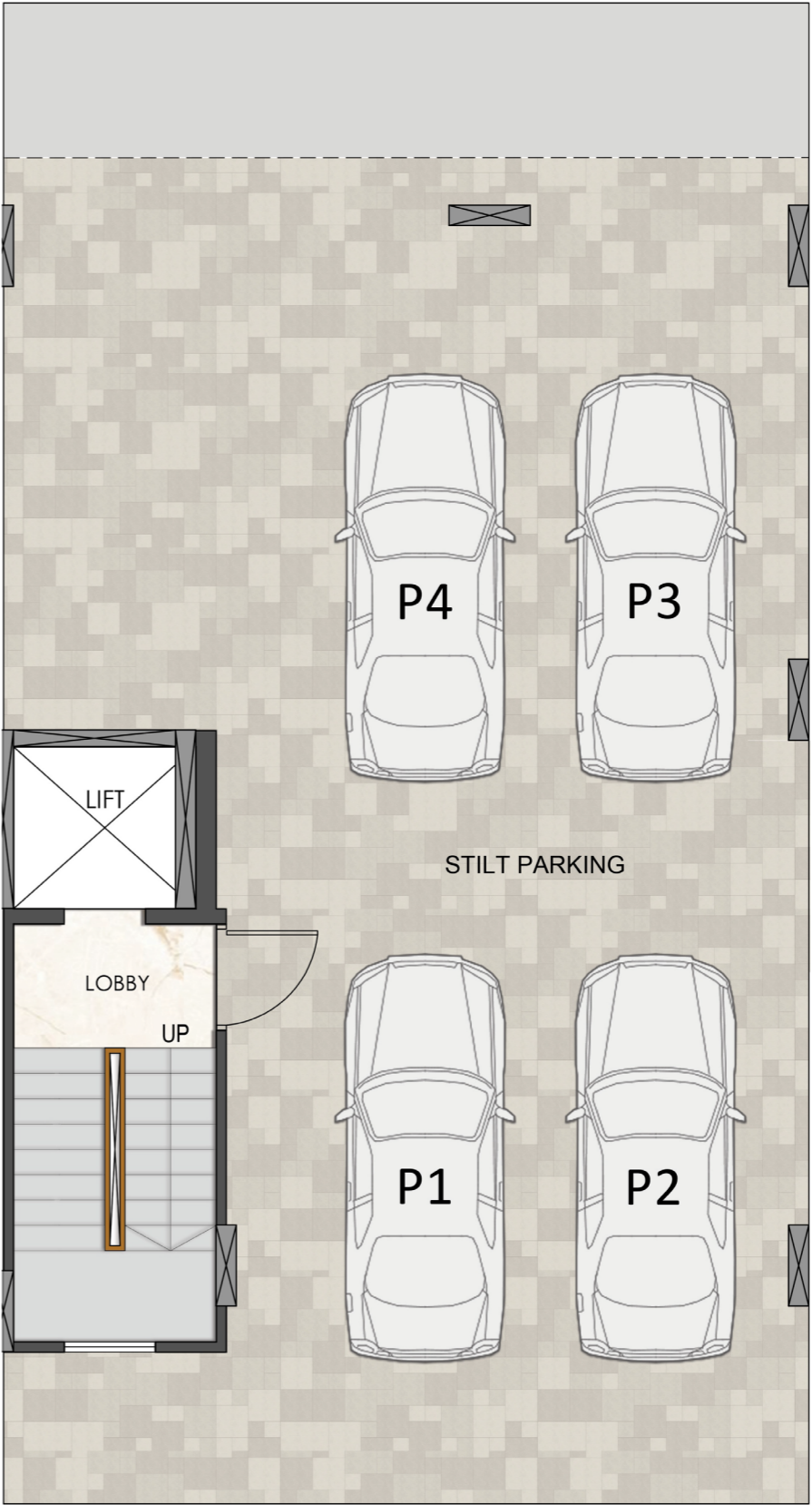
Disclaimer: It should be noted that the information contained herein may have certain technical inaccuracies or typographical errors, and while the Promoter Company does not doubt the Unit Plan's accuracy, no guarantee or warranty or representation as to its accuracy and completeness is being made by the Promoter Company. Unit Plan(s)/ Site Plan/ Layout Plan is/ are intended to give a specific view of the layout only. Minor inaccuracies in square footage and inaccuracies in layout and room dimensions as shown on any Plan will not excuse the Allottee from completing the purchase of the Unit without abatement in price and/ or recourse against the Promoter Company. Further, Site plans, layout plans, landscaping, dimensions and Specification(s) are not deemed or intended to form part of any contract or warranty unless specifically incorporated in writing into the contract and signed by the parties to it.
For the purpose of this Project, 1 Hect. = 2.471 Acres. 1 Acre = 4840 sq.yds. or 4046.864 sq. mtrs.. 1 sq.mtr. = 10.764 sq.ft.

TYPE-H (2BHK + 2 TOILETS)



• Car Parking Floor (Stilt Floor) • First Floor • Second Floor • Third Floor • Fourth Floor

TYPE-H STILT FLOOR

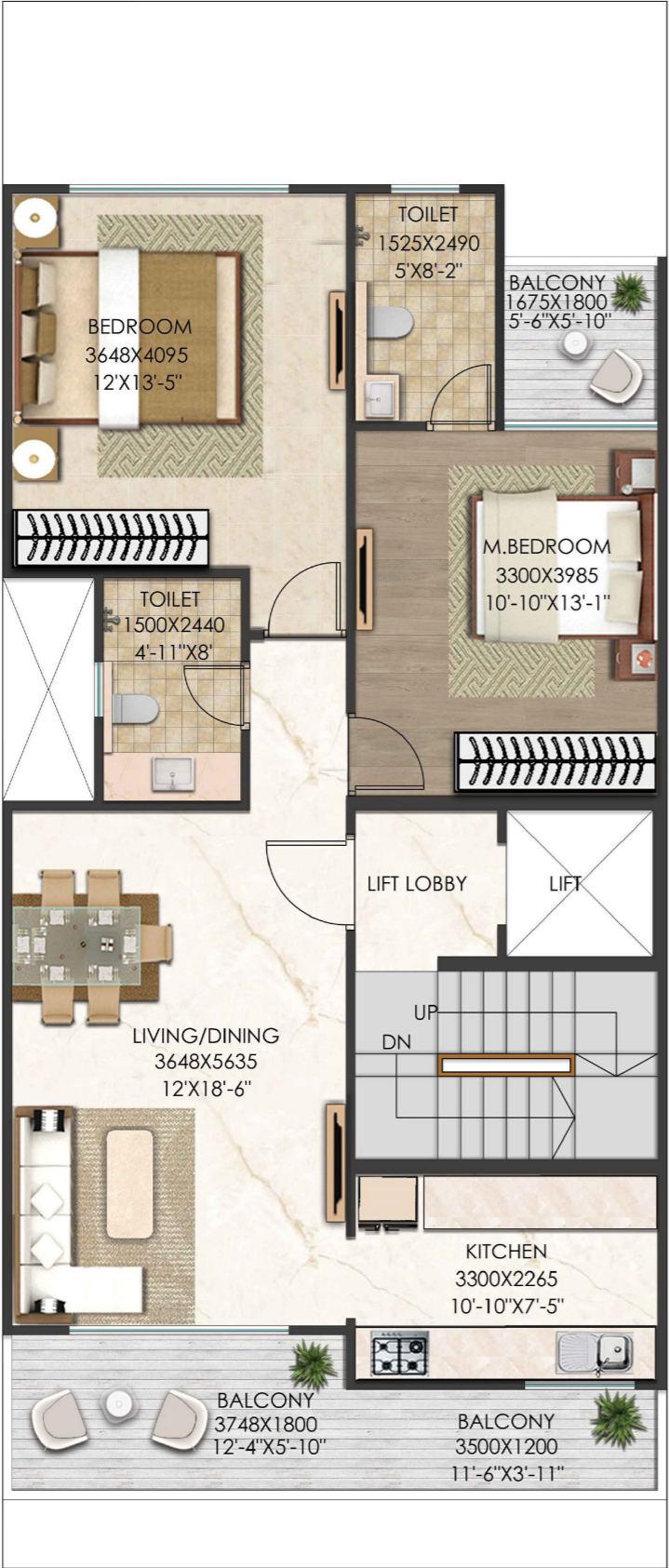


• Car Parking Floor (Stilt Floor) • First Floor • Second Floor • Third Floor • Fourth Floor

Disclaimer: It should be noted that the information contained herein may have certain technical inaccuracies or typographical errors, and while the Promoter Company does not doubt the Unit Plan's accuracy, no guarantee or warranty or representation as to its accuracy and completeness is being made by the Promoter Company. Unit Plan(s)/ Site Plan/ Layout Plan is/ are intended to give a specific view of the layout only. Minor inaccuracies in square footage and inaccuracies in layout and room dimensions as shown on any Plan will not excuse the Allottee from completing the purchase of the Unit without abatement in price and/ or recourse against the Promoter Company. Further, Site plans, layout plans, landscaping, dimensions and Specification(s) are not deemed or intended to form part of any contract or warranty unless specifically incorporated in writing into the contract and signed by the parties to it.
For the purpose of this Project, 1 Hect. = 2.471 Acres, 1 Acre = 4840 sq.yds. or 4046.864 sq. mtrs., 1 sq.mtr. = 10.764 sq.ft.

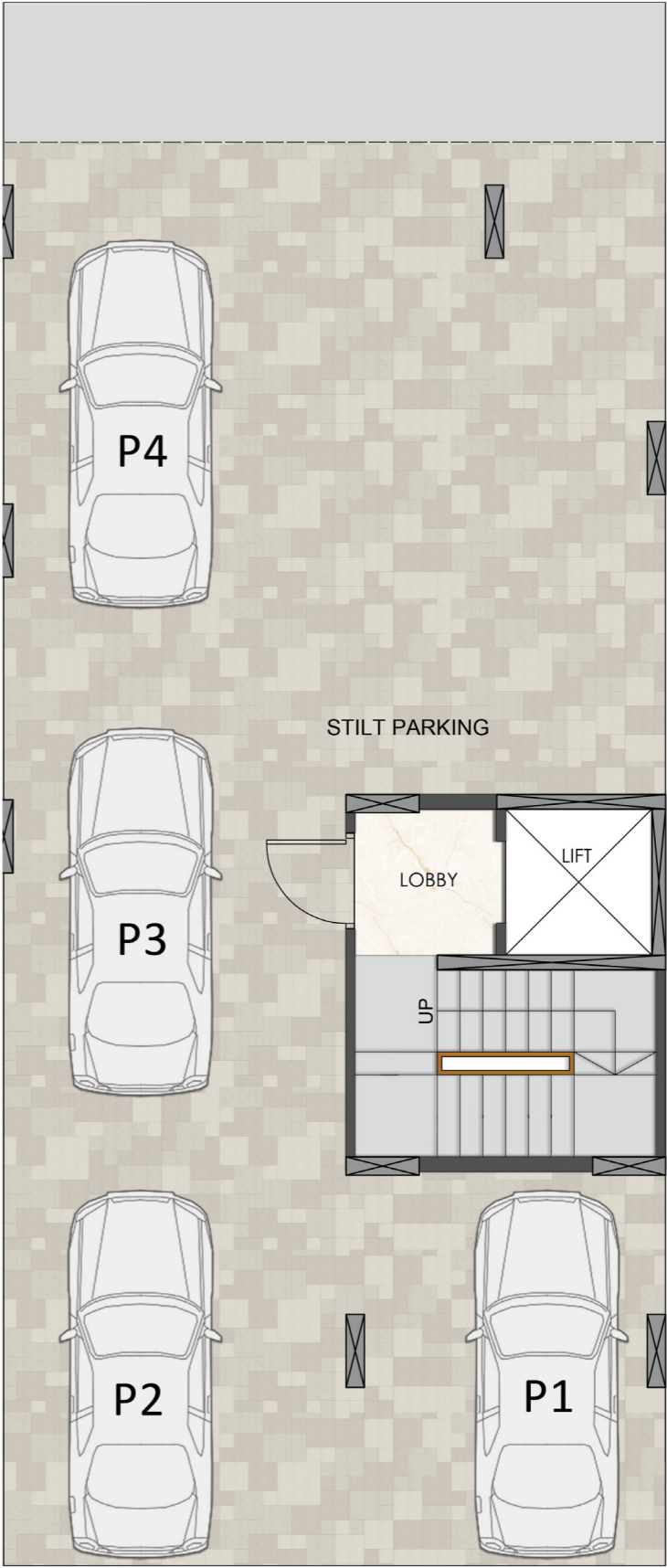
Disclaimer: It should be noted that the information contained herein may have certain technical inaccuracies or typographical errors, and while the Promoter Company does not doubt the Unit Plan's accuracy, no guarantee or warranty or representation as to its accuracy and completeness is being made by the Promoter Company. Unit Plan(s)/ Site Plan/ Layout Plan is/ are intended to give a specific view of the layout only. Minor inaccuracies in square footage and inaccuracies in layout and room dimensions as shown on any Plan will not excuse the Allottee from completing the purchase of the Unit without abatement in price and/ or recourse against the Promoter Company. Further, Site plans, layout plans, landscaping, dimensions and Specification(s) are not deemed or intended to form part of any contract or warranty unless specifically incorporated in writing into the contract and signed by the parties to it.
For the purpose of this Project, 1 Hect. = 2.471 Acres, 1 Acre = 4840 sq.yds. or 4046.864 sq. mtrs., 1 sq.mtr. = 10.764 sq.ft.

TYPE-J (2BHK + 2 TOILETS)



• Car Parking Floor (Stilt Floor) • First Floor • Second Floor • Third Floor • Fourth Floor

TYPE-J STILT FLOOR



• Car Parking Floor (Stilt Floor) • First Floor • Second Floor • Third Floor • Fourth Floor

Disclaimer: It should be noted that the information contained herein may have certain technical inaccuracies or typographical errors, and while the Promoter Company does not doubt the Unit Plan's accuracy, no guarantee or warranty or representation as to its accuracy and completeness is being made by the Promoter Company. Unit Plan(s)/ Site Plan/ Layout Plan is/ are intended to give a specific view of the layout only. Minor inaccuracies in square footage and inaccuracies in layout and room dimensions as shown on any Plan will not excuse the Allottee from completing the purchase of the Unit without abatement in price and/ or recourse against the Promoter Company. Further, Site plans, layout plans, landscaping, dimensions and Specification(s) are not deemed or intended to form part of any contract or warranty unless specifically incorporated in writing into the contract and signed by the parties to it.
For the purpose of this Project, 1 Hect. = 2.471 Acres, 1 Acre = 4840 sq.yds. or 4046.864 sq. mtrs., 1 sq.mtr. = 10.764 sq.ft.

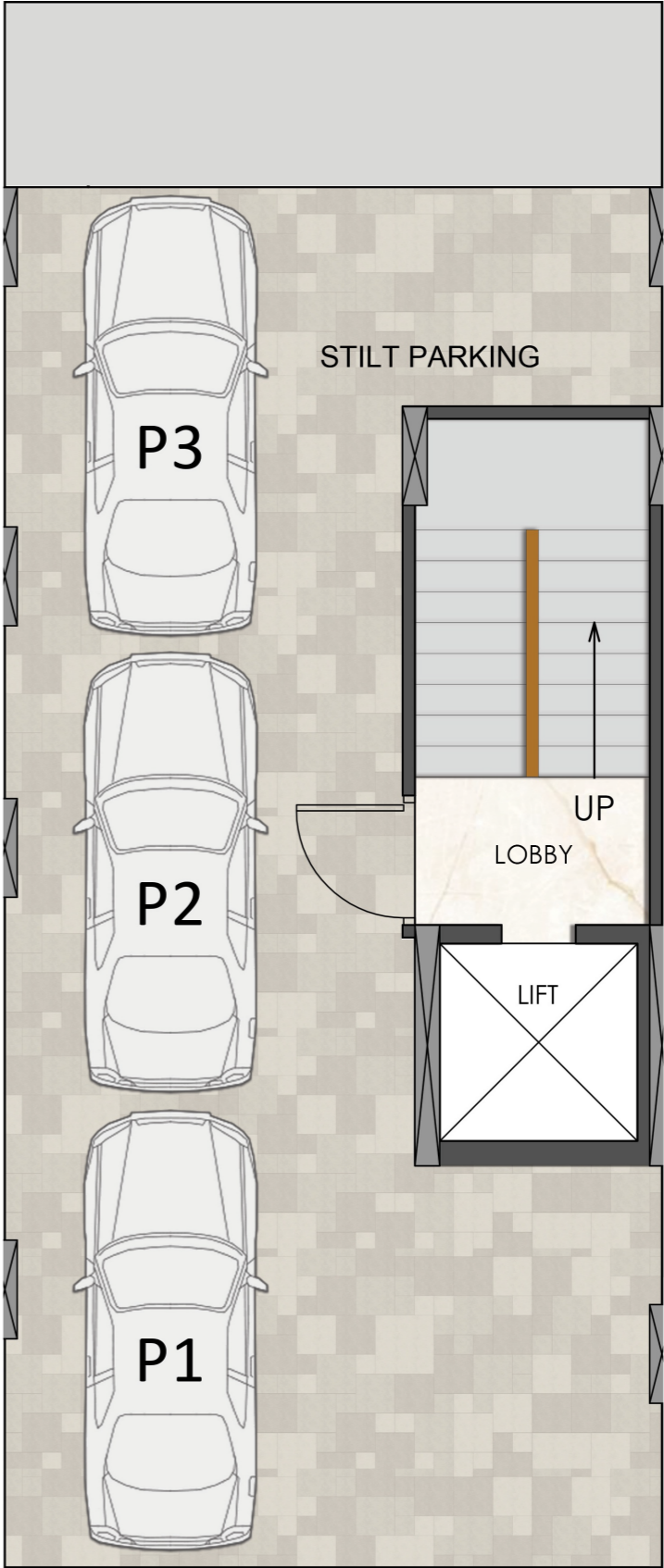
Disclaimer: It should be noted that the information contained herein may have certain technical inaccuracies or typographical errors, and while the Promoter Company does not doubt the Unit Plan's accuracy, no guarantee or warranty or representation as to its accuracy and completeness is being made by the Promoter Company. Unit Plan(s)/ Site Plan/ Layout Plan is/ are intended to give a specific view of the layout only. Minor inaccuracies in square footage and inaccuracies in layout and room dimensions as shown on any Plan will not excuse the Allottee from completing the purchase of the Unit without abatement in price and/ or recourse against the Promoter Company. Further, Site plans, layout plans, landscaping, dimensions and Specification(s) are not deemed or intended to form part of any contract or warranty unless specifically incorporated in writing into the contract and signed by the parties to it.
For the purpose of this Project, 1 Hect. = 2.471 Acres, 1 Acre = 4840 sq.yds. or 4046.864 sq. mtrs., 1 sq.mtr. = 10.764 sq.ft.

TYPE-M1 (1BHK+1 TOILETS)



• Car Parking Floor (Stilt Floor) • First Floor • Second Floor • Third Floor • Fourth Floor

TYPE-M1 STILT FLOOR

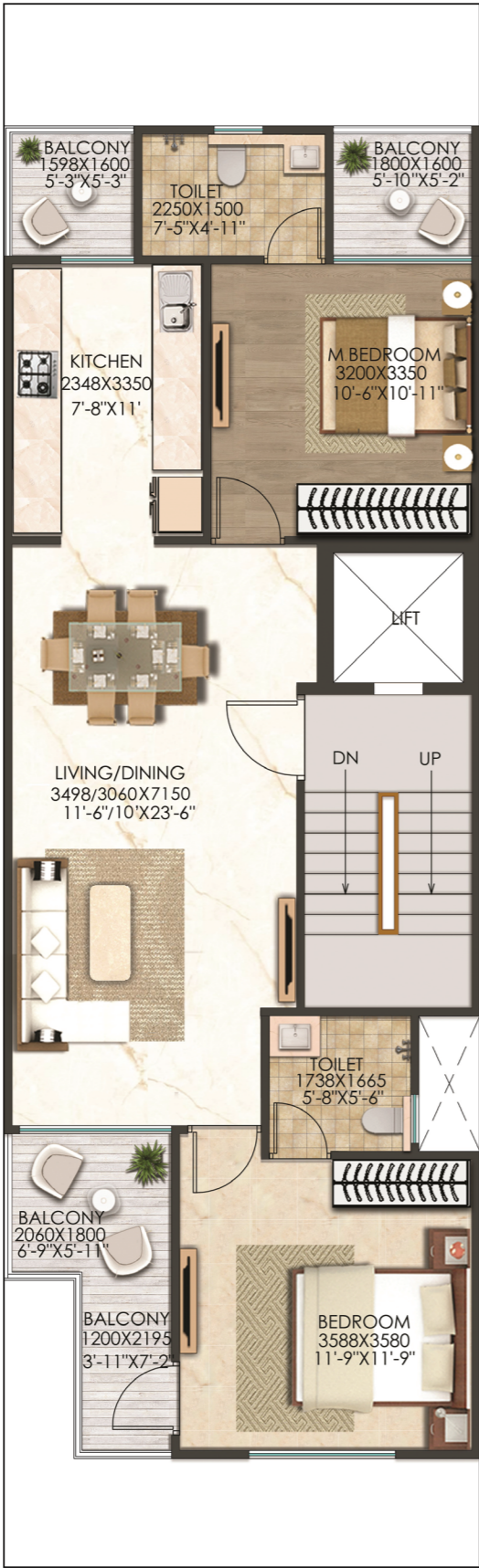


• Car Parking Floor (Stilt Floor) • First Floor • Second Floor • Third Floor • Fourth Floor

Disclaimer: It should be noted that the information contained herein may have certain technical inaccuracies or typographical errors, and while the Promoter Company does not doubt the Unit Plan's accuracy, no guarantee or warranty or representation as to its accuracy and completeness is being made by the Promoter Company. Unit Plan(s)/ Site Plan/ Layout Plan is/ are intended to give a specific view of the layout only. Minor inaccuracies in square footage and inaccuracies in layout and room dimensions as shown on any Plan will not excuse the Allottee from completing the purchase of the Unit without abatement in price and/ or recourse against the Promoter Company. Further, Site plans, layout plans, landscaping, dimensions and Specification(s) are not deemed or intended to form part of any contract or warranty unless specifically incorporated in writing into the contract and signed by the parties to it.
For the purpose of this Project, 1 Hect. = 2.471 Acres, 1 Acre = 4840 sq.yds. or 4046.864 sq. mtrs., 1 sq.mtr. = 10.764 sq.ft.

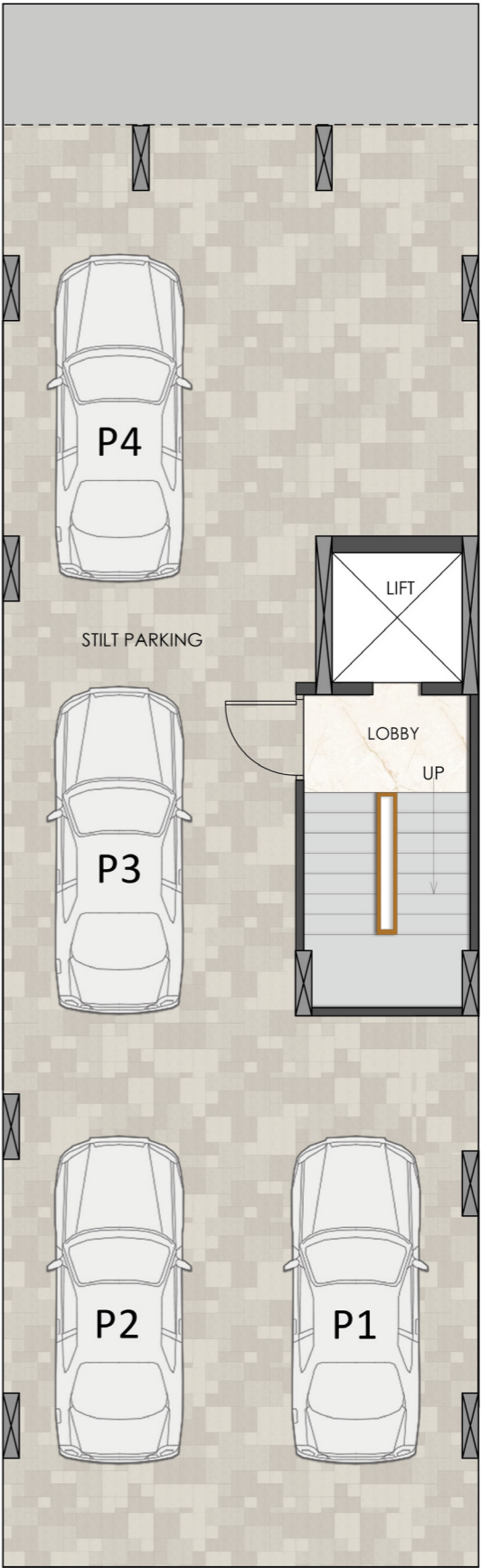
Disclaimer: It should be noted that the information contained herein may have certain technical inaccuracies or typographical errors, and while the Promoter Company does not doubt the Unit Plan's accuracy, no guarantee or warranty or representation as to its accuracy and completeness is being made by the Promoter Company. Unit Plan(s)/ Site Plan/ Layout Plan is/ are intended to give a specific view of the layout only. Minor inaccuracies in square footage and inaccuracies in layout and room dimensions as shown on any Plan will not excuse the Allottee from completing the purchase of the Unit without abatement in price and/ or recourse against the Promoter Company. Further, Site plans, layout plans, landscaping, dimensions and Specification(s) are not deemed or intended to form part of any contract or warranty unless specifically incorporated in writing into the contract and signed by the parties to it.
For the purpose of this Project, 1 Hect. = 2.471 Acres, 1 Acre = 4840 sq.yds. or 4046.864 sq. mtrs., 1 sq.mtr. = 10.764 sq.ft.

TYPE-M2 (2BHK + 2 TOILETS)



• Car Parking Floor (Stilt Floor) • First Floor • Second Floor • Third Floor • Fourth Floor

TYPE-M2 STILT FLOOR



• Car Parking Floor (Stilt Floor) • First Floor • Second Floor • Third Floor • Fourth Floor

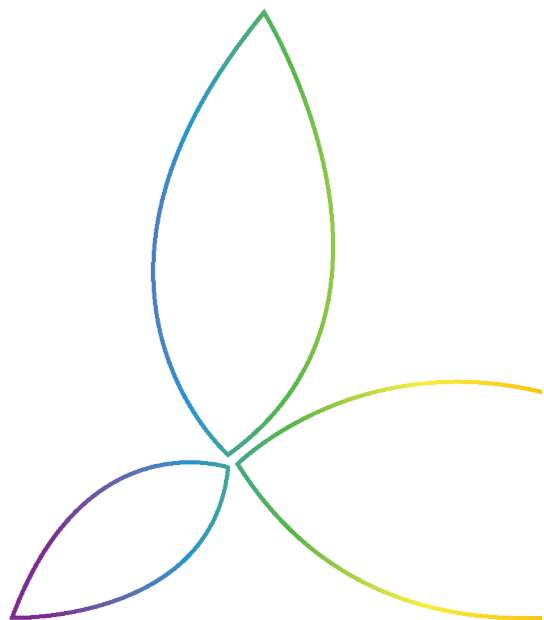
Disclaimer: It should be noted that the information contained herein may have certain technical inaccuracies or typographical errors, and while the Promoter Company does not doubt the Unit Plan's accuracy, no guarantee or warranty or representation as to its accuracy and completeness is being made by the Promoter Company. Unit Plan(s)/ Site Plan/ Layout Plan is/ are intended to give a specific view of the layout only. Minor inaccuracies in square footage and inaccuracies in layout and room dimensions as shown on any Plan will not excuse the Allottee from completing the purchase of the Unit without abatement in price and/ or recourse against the Promoter Company. Further, Site plans, layout plans, landscaping, dimensions and Specification(s) are not deemed or intended to form part of any contract or warranty unless specifically incorporated in writing into the contract and signed by the parties to it.
For the purpose of this Project, 1 Hect. = 2.471 Acres. 1 Acre = 4840 sq.yds. or 4046.864 sq. mtrs.. 1 sq.mtr. = 10.764 sq.ft.

Disclaimer: It should be noted that the information contained herein may have certain technical inaccuracies or typographical errors, and while the Promoter Company does not doubt the Unit Plan's accuracy, no guarantee or warranty or representation as to its accuracy and completeness is being made by the Promoter Company. Unit Plan(s)/ Site Plan/ Layout Plan is/ are intended to give a specific view of the layout only. Minor inaccuracies in square footage and inaccuracies in layout and room dimensions as shown on any Plan will not excuse the Allottee from completing the purchase of the Unit without abatement in price and/ or recourse against the Promoter Company. Further, Site plans, layout plans, landscaping, dimensions and Specification(s) are not deemed or intended to form part of any contract or warranty unless specifically incorporated in writing into the contract and signed by the parties to it.
For the purpose of this Project, 1 Hect. = 2.471 Acres. 1 Acre = 4840 sq.yds. or 4046.864 sq. mtrs.. 1 sq.mtr. = 10.764 sq.ft.

SPECIFICATIONS

S.NO.	ITEM	SPECIFICATION
1.	DWELLING UNITS	
	Living Room & Dining Room	
a)	Flooring	Vitrified Tiles
b)	Walls & Ceiling	Oil bound Distemper
c)	AC	AC in Living Room
2.	Bedrooms	
a)	Flooring (Master Bed Room)	Vitrified Tile/Laminated wooden flooring
b)	Flooring (Other Room)	Vitrified Tiles
c)	Walls & Ceiling	Oil bound Distemper
d)	AC	AC in All Bedrooms
3.	Kitchen	
a)	Flooring	Vitrified Tiles/Ceramic Tile
b)	Dado	Ceramic Glazed Tiles 600mm high above counter & oil Bond Distemper on rest area
c)	Walls/Fittings	Modular Kitchen
d)	Walls/Ceiling	Oil bound Distemper
e)	Sink	Stainless Steel single bowl sink
f)	Counter Top	Granite Stone/Tile
g)	Kitchen Appliances	Chimney & Cooktop
4.	Toilets	
a)	Flooring	Anti Skid Ceramic Tiles
b)	Dado	Ceramic Glazed Tiles upto 7' level
c)	Sanitary Fixtures	WC, Wash Basin
d)	False Ceiling	Grid Ceiling
5.	Balcony	
a)	Flooring	Anti Skid/Matt Finish Ceramic Tiles
b)	Railing	MS Railing with enamel paint
6.	Doors & Windows	
a)	All Internal Doors	Wooden frame, flush doors with both sides laminated/Paint Finish
b)	External Door/Windows	UPVC/MS/Aluminum sliding shutter, openable shutters. with glass panels.
7.	External Finishing	
a)	External Surface	External grade texture paint .

S.NO.	ITEM	SPECIFICATION
1.	COMMON AREAS (TOWER AREA)	
	Entrance Lobby/Lift Lobby	
a)	Flooring	Stone/Tile
b)	Walls & Ceiling	Oil bound Distemper
c)	Lift fascia	Stone/Tile/Paint
2.	Staircase	
a)	Flooring/treads	Stone/Tile
b)	Walls & Ceiling	Oil bound Distemper
c)	Railing	MS railing with enamel paint
3.	Terrace	
a)	Flooring	Brick Bat Coba or Water Proofing Treatment
b)	Walls	External grade paint
4.	Stilt Floor	
a)	Flooring	Stone/Tile





Elevated living for the select few



State of the art, contemporary construction and architecture



Low density independent premium floors



Well Ventilated Independent Floors with abundant natural light

The rendered images shown are for illustrative purposes only and may not accurately represent the final product. Actual design, materials, and finishes may vary.

The rendered images shown are for illustrative purposes only and may not accurately represent the final product. Actual design, materials, and finishes may vary.